

Vanguard Configuration Loader

Overview

Introduction

The Vanguard Configuration Loader application lets you:

- Upload configuration memory files (.mem files) from your Vanguard products to your personal computer.
- Download configuration memory files (.mem files) from your personal computer to your Vanguard products.

Configuration images can be transferred using the following methods:

- ASCII Coldload via your personal computer's COM Ports.
- Remote TFTP file transfers using your personal computer's Winsock compliant TCP/IP protocol stack.

This application operates under any 32-bit version of Microsoft Windows and is available on the Vanguide CD-ROM which accompanies Vanguard products.

What is Vanguard Configuration Loader?

Vanguard Configuration Loader is part of the Vanguide Application Set. This set also includes the Vanguide Application Manager which provides you with access to the other Vanguide applications.

■ Note

For the purposes of demonstration, all graphic images in this document have been taken from the Vanguard Configuration Loader application running under Windows 95. Some images might appear slightly different when operating under different versions of Windows. However, the functionality of this application is the same as presented in this manual.

Intended Use

This document is intended for use by anyone wanting to install the Vanguard Configuration Loader and transfer configuration files for use on Vanguard products.

In This Manual

Topic	See Page
Installing Configuration Loader	2
Configuration The Loader Main Application Window	3
Configuration Loader Dialog Box	7
Downloading a Vanguide CD-ROM Configuration File	8
Downloading Configurations From Hard Disk	9
Obtaining Configuration Files From the Internet	10
Retrieving Configuration Files	11

Installing Configuration Loader

Overview

Vanguard Configuration Loader is installed on the hard disk of your computer. For further instruction on installing Vanguide applications, please refer to the Vanguide Applications Set Installation Guide.

Configuration The Loader Main Application Window

Main Application Window

The main Vanguard Configuration Loader application screen, shown Figure 1, appears when you start the application.

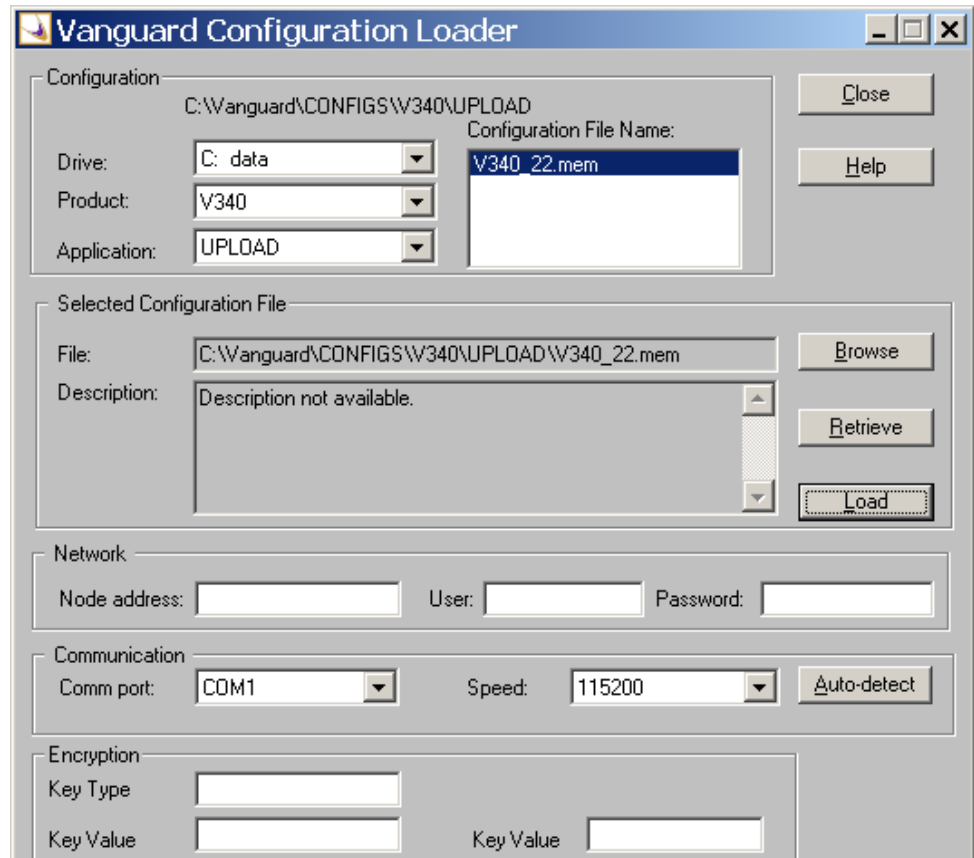


Figure 1. Configuration Loader Main Application Window

Using The Main Application Window

There are five functional panels in the main application window:

- Configuration
- Selected Configuration File
- Network
- Communication
- Encryption

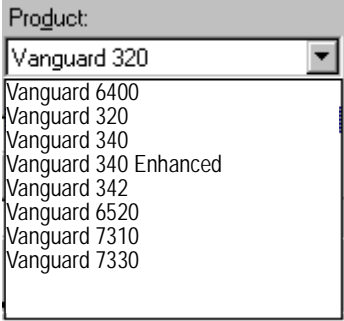
Beside the five panels, the window contains these buttons:

- Close - Closes and exits the Loader application.
- Help - Invokes Loader application help.
- Browse - Allows you to browse your system to select the desired files.
- Retrieve - Lets you select an existing configuration file from you computer.
- Load - Loads a configuration into the Vanguard device.
- Auto-detect - Lets you computer detect the speed at which it is set to communicate

■ **Note**

The Configuration Loader application is designed to present error messages if it senses that something has gone wrong. The best source for error message descriptions is the main window **Help** button. Selecting this button allows you to view the online Loader help files along with full error message descriptions.

This table explains how to use the fields, lists, and buttons of the Loader main application window.

<i>Window Item:</i>	<i>Purpose:</i>
Configuration-Drive:	Identifies the disk where the configuration files are located. Click in this field to allow Loader to scan for current drives, then select the drive from the list.
Configuration-Product: 	Lists all product types found on the selected drive. Select the product type for which you want to obtain a configuration file.
Configuration-Application:	Selects the Upload or Download action.
Configuration-Configuration File Name:	Lists all configuration files for the selected combination of product and application. Select an appropriate configuration file to be uploaded or downloaded.
Selected Configuration File-File:	Lists the selected configuration filenames.
Selected Configuration File-Description:	Displays a description of the selected configuration file. If there is no description, the field displays the Description Not Available message.
Selected Configuration File-Browse:	<p>Invokes a standard Windows file selection dialog box. Use this box when you need to locate your configuration file.</p> <p>■ Note Before selecting this button, ensure that there is a product selected in the Product box. Otherwise, the download operation aborts.</p>
Selected Configuration File-Retrieve:	<p>Invokes the file upload sequence using the parameters found in the Communications Panel.</p> <p>■ Note You are prompted to enter a filename (.mem extension) and a brief description.</p>

Window Item:	Purpose: (continued)
Selected Configuration File-Load:	Invokes the file download sequence using the parameters found in the Communications Panel.
Network-Node Address:	Use this field to designate the node address of your Vanguard product. When using TFTP, you must specify the IP Address of the Vanguard product.
Network-User:	Designates the user name for your Vanguard product.
Network-Password:	Use this field to designate the password for your Vanguard product. If the Vanguard product uses the default password, leave this box empty. If it uses both a manager password and a user password, enter the manager password and leave the User box empty.
Communication-Comm Port:	Use this drop-down list to select a communications port for your upload/download operation. You can select a COM port (for serial direct connection transfer), or TCP/IP (for TFTP transfer). ■Note All available personal computer COM ports are listed. If the desired COM port is not available (used by another program), quit the program in use and restart the Loader application. TCP/IP is listed if the TCP/IP configuration is running at Loader start-up.
Communication-Speed:	This drop-down list is used to select the desired download speed. ■Note This menu item is not available when a TCP/IP COM port is selected.
Communication-Auto Detect:	Select this button to allow the Loader speed auto-detect function to find the optimum COM Port speed. ■Note This menu item is not available when TCP/IP is selected.
Encryption:	Use these fields to designate encryption values for your Vanguard product.

■ **Note**

The Encryption area is grayed out if the last 'Product' selected in this window did not support encryption. If you select a Vanguard product that supports encryption (and is loaded with the Security license), but you do not fill in the Encryption area, the Encryption Screen Detected dialog appears (See Figure 2).

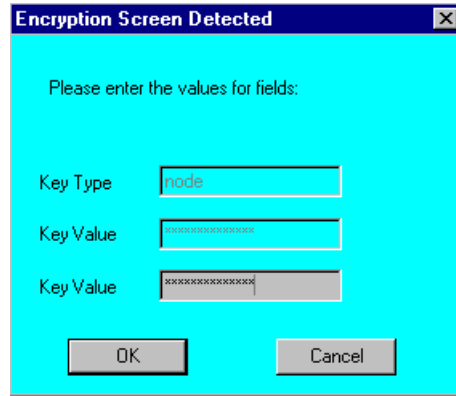


Figure 2. Encryption Screen Detected Dialog Box

Configuration Loader Dialog Box

Overview

Once you have used the main application window to select a configuration file to upload/download, and the **Load** or **Retrieve** button has been selected, the Configuration Loader dialog window appears. This window updates you on the image upload/download sequence and alerts you to any problems that can occur. The window also provides a **Cancel** button for halting the upload/download process.

Window Messages

This table details messages that can appear during an upload or download.

Window Message:	Meaning:
Connecting to the Control Panel of the attached device.	Indicates that the Loader application is establishing a session with the attached device. Devices must be forced into a specific state in order to receive new configuration files. The Loader accomplishes this by first accessing the attached device's Control Panel.
Transferring the new Configuration file to the attached device at <speed> bps. <configuration filename>	Indicates that the device is now accepting the configuration download via a personal computer COM Port ASCII transfer at a certain rate of speed (bps).
Transferring the new Configuration file <configuration filename> to the device using TFTP.	Indicates that the device is now accepting the configuration download using TFTP.
Retrieving the Configuration file <configuration filename> from the device using TFTP.	Indicates that a configuration file is being uploaded to the personal computer using TFTP.
Please wait while the attached device is being reset.	Indicates that the device is being reset.
The product selected: <product type>, and the product reported by the attached device do not match.	This message indicates that the configuration file's device type does not match the physical device type. Return to the Loader Main Application Window and select the proper device type.
Configuration file has been successfully transferred.	Indicates a successful image download.
Disconnecting from the attached device. Please wait...	Indicates that the Loader Application is logging out of the attached device following a successful upload/download.

Downloading a Vanguard CD-ROM Configuration File

Overview

Configuration files can be obtained from several sources, including:

- Vanguard CD-ROM: Some releases of the Vanguard CD-ROM provide configuration files located in a pre-defined directory structure. For these releases, configuration files have been created for a specific Product Type and configuration release.
- Hard Disks and Network Drives: Vanguard Configuration Loader is also designed to support transfer of configuration files from mounted hard disks and network drives.

Procedure

Use this procedure to obtain and download a device configuration file from your hard disk or network drive.

Step	Action
1	Insert the Vanguard CD-ROM in your CD Drive.
2	Access the Configuration Loader main application window.
3	Click the Drive text box. The system checks to see which drives are available.
4	Select the disk drive designator.
5	Select the Vanguard product to be downloaded from the Product drop-down list.
6	Click Browse to locate the file you wish to download, and then click OK .
7	If you are connected via the personal computer's COM port, type the address of the Vanguard product in the Node Address box. If you are using TCP/IP, type the IP Address.
8	Enter the user and password for the Vanguard product in the User and Password boxes. ■ Note If the Vanguard product does not use a user and password, leave the boxes empty. If it uses both a manager and a user password, enter the manager password and leave the User box empty.
9	Select a COM port or TCP/IP from the COM port drop-down list.
10	Fill in the values, if your Vanguard product is to be encrypted, for the Key Type, Key Value 1 and 2. If you leave them empty, and the device is encrypted, you are prompted to enter these values.
11	Select the appropriate COM port speed from the Speed drop-down list, or click Auto-Detect . ■ Note This box is not available if you select TCP/IP.
12	Click Load . The download begins. ■ Note The Configuration Loader dialog box informs you of any problems with the download.

Downloading Configurations From Hard Disk

Overview

Configuration files can be obtained from several sources. This section explains how to download a device configuration file from your personal computer's hard disk or a network drive.

■Note

Although this procedure does not let you obtain files from the Vanguard CD-ROM itself, the CD-ROM must still be inserted and available to provide device transfer configuration files.

Procedure

Use this procedure to obtain and download a device configuration file from your hard disk or network drive.

Step	Action
1	Insert the Vanguard CD-ROM in your CD-ROM Drive.
2	Access the Configuration Loader Main Application window.
3	Click the Drive text box. The system checks to see which drives are available.
4	Select the appropriate disk drive designator.
5	Select the Vanguard product to be downloaded from the Product drop-down list.
6	Click Browse to locate the file you wish to download and click OK .
7	If you are connected via the personal computer's COM port, enter the address of your Vanguard product in the Node Address box. If you are using TCP/IP, enter the IP Address instead.
8	Enter the user and password for your Vanguard product in the User and Password boxes. ■Note If your Vanguard product does not use a user and password, leave the boxes empty. If it uses both a manager and a user password, enter the manager password and leave the User box empty.
9	Select a COM Port or TCP/IP from the COM port drop-down list.
10	Fill in the values, if your Vanguard product is to be encrypted, for the Key Type, Key Value 1 and 2. If you leave them empty, and the device is encrypted, you are prompted to enter these values.
11	Select the appropriate COM port speed from the Speed drop-down list, or click Auto-Detect . ■Note This text box is not available if you choose a TCP/IP COM port.
12	Click Load and the download begins. ■Note The Configuration Loader dialog box informs you of any problems with the download.

Obtaining Configuration Files From the Internet

Overview

Vanguard Managed Solutions maintains a list of popular Vanguard configuration files on the following web site:

<http://www.vanguardms.com>

If you download these files from the web, you must locate them in the appropriate hard disk sub-directory.

Configuration Directories

The Loader installation program creates both download and upload directories for each Vanguard product on your personal computer's hard disk. For example, the Vanguard 320 configuration files are stored in:

- C:\Vanguard\CONFIGS\V320\UPLOAD
- C:\Vanguard\CONFIGS\V320\DOWNLOAD

Make sure you place your files in the correct directories. The files are stored this way so Configuration Loader can locate and display the list of available images in the Release drop-down list.

Retrieving Configuration Files

Introduction

Retrieving a configuration file lets you back up, or save, an existing configuration should a new configuration prove inadequate. For example, if you wanted to load a new configuration into a Vanguard 320, you would retrieve your existing configuration and save it on your local drive. This allows you to restore that configuration if the new configuration did not work as expected.

Retrieving Files

Complete this procedure to retrieve configuration files:

Step	Action	Result
1	Select the product type representing the attached device from the Product Control.	After a product selection changes, the Application Control is updated to include all available applications for the selected product.
2	Select the desired application.	
3	Click Retrieve .	The Retrieve Configuration As dialog box appears.
4	Select a MEM (memory) file.	The file is saved in the directory specified by the path setting in the Application and Product boxes.

